



West Suburban Family Group

WSFG Committee News

The West Suburban Family Group Committee is represented by members from the six school districts that make up the West Suburban Interagency Early Intervention Committee (WSIEIC). Other committee members represent outside agencies that provide services for families of children with special needs; Arc—Greater Twin Cities and St. David's Child Development and Family Services. Currently two parents of children with special needs also serve this committee..

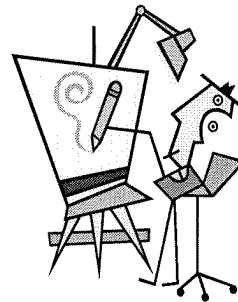
Funding for school year 2005 -06 is significantly

less than previous years, making the exercise to provide exceptional educational opportunities for the families in this IEIC a greater challenge than ever.

It has been decided to offer a total of \$2500 in grants to fund ECSE parent education programs in Hopkins, Minnetonka, Orono, St. Louis Park, Wayzata and Westonka.

The committee also designated budget dollars to fund partial to full scholarships and transportation vouchers (both subject to approval) to ECSE parents who would like to partici-

pate in parent education opportunities in the metro area. Parent requests will be processed through the WSEI office. Call WSEI @ 952-933-4769 if you are a parent interested accessing these funds.



Learn, Network,
Advocate and
Make a Difference!

West Suburban
Family Group (WSFG)

Volume 2, Issue 1

Spring 2006

WSFG is offering a total of \$2500 in grants to fund ECSE parent education programs in Hopkins, Minnetonka, Orono, St. Louis Park, Wayzata and Westonka.

ECSE parents are also eligible for partial and full scholarships to parent education opportunities in the metro area.

Call 952-933-4769

Pacer Presents: Parent Leadership Conference "Champions for Children with Disabilities"

April 28 & 29th

Participants will:

- Complete a personal leadership assessment
- Interact with parent-leaders from across the state
- Receive a training manual with information and resources
- Join the PACER Parent-Leader Network
- Hear national, state and local speakers

Session topics will include:

- *Understanding the Big Picture—IDEA 2004; No Child Left Behind; Special Ed Finance 101
- *Increase You Parent-Leader Effectiveness Skills-Communications, conflict-Resolution, and Collaboration.
- *The Nuts and Bolts of Serving as Parent-Advisors
- *Making Your Case: Impacting Legislation and Policy

*Exploring Interagency and Spec. ed Advisory Comm. and Council Opportunities

*Tips and Tools from the Trenches: Ideas That Worked.

This conference is open to parents who have a child with a disability and who are interested in serving on spec. ed. Or inter-agency advisory committees or council. Space is limited. Contact: Barb Ziemke 952-838-9000 or bziemke@pacer.org by April 1

Inside this issue:

Classes @ St. D's	2
Parent Support Groups	2
Classes @ Arc	3
Health Care Options	3
Governor's Council	3
MN Kids Coalition	3
Parent Connection	4

What is ST. David's Child Development and Family Services?

St. David's Child Development & Family Services, 3395 Plymouth Rd, Minnetonka, MN 55305 is a non-sectarian agency providing innovative and effective programs to thousands of families through offices in Minnetonka, Crystal, and Brooklyn Park. Our mission is to build stronger families and communities through innovative programs that change people's lives. For nearly 45 years, St. David's has built a reputation as a leading provider of innovative, comprehensive, and integrated services, emphasizing partnerships with families and their children. Programs include:

- Early childhood education and special services
- Clinic services – rehabilitative therapies and mental health services
- Home and community-based services for children and young adults with special needs
- Services aimed at preventing child abuse or neglect

New offerings at St. David's :
PIECES OF THE PUZZLE: designing integrated interventions for young children with autism spectrum disorders across home and school

April 7, 2006 8-4:30

- The workshop will address ways to engage children in creative play that facilitates motor, cognitive, language and social development.
 - Translating the findings from an assessment into practical interventions
 - Sensory and regulatory issues : Will address why with ASD children have difficulty talking, eating, and sleeping
 - Autism and the Family: panel presentation with parents, siblings and individuals with ASD speaking from their perspective
- \$65 ind. \$90 couple or parent and care provider



Parent Education

When Children Won't Eat: Picky Eaters vs. Problem Feeders: The Sequential Oral Sensory Approach (S.O.S.) to Feeding with Kay Toomey, PhD. April 20, 2006 5:30 - 8:30

A parent seminar discussing how and when children develop necessary skills for feeding and identifying the major reasons why children won't eat. This seminar will illustrate components of a feeding assessment and how to implement the SOS strategies with toddlers, young children and older children with development delays. \$35.00 per family.

Call Carol or Wendy @ 952-933-4769 for parent scholarship funding for these events.

Parent Support Groups:



Fathering the Child with Special Needs

A PARENT GROUP FOR FATHERS WITH CHILDREN FROM BIRTH TO KINDERGARTEN WHO HAVE SPECIAL NEEDS.

Enjoy an inviting early childhood environment
Interact with your child in a supportive setting
Meet with other fathers who are managing special needs

LOCATION: Anne Sullivan School, Room 296
3100 East 28th Street
Minneapolis, MN 55404
*Enter at the main entrance (south side) of the building.
If no one is at the door, call 668-4990 for someone to let you in.*

DATE: Second Mondays beginning October 10, 2005
Nov 14, Dec 12, Jan 9, Feb 13, March 13, April 10, May 15, June 12

TIME: 6:00 to 8:00 PM

To Register, Call: Don Nikkola: 612-348-7595
Steve Roeklein: 612-721-2762 ext. 221

There is no fee for this group



Down Syndrome Parent Group in West suburbs:

Contact Tim & Ann
Bremer 952-939-0350

NEW: Latino Down Syndrome Parent Group. Contact Gladis
Rosa:es 651-487-5365

Parent Connections:

The Journey of Parenthood

A support group for parents of children of all ages with disabilities. Sponsored by Arc-Greater Twin Cities 952-920-0855

Call 952-933-4769 if you need help with transportation.

St. David's Child Development and Family Services sponsors a support group for mothers of children with special health needs. Call Judy Strommen @ 952-548-8680

FACT (Families With Autistic Children Together) Meets in Hopkins, MN Contact: hopkinsfact@mn.rr.com

CHAAD a support group for Children and Adults with Attention-Deficit/Hyperactivity Disorder
_952-922-5761 or (800) 233-4050
<http://www.chadd.org>

Arc Greater Twin Cities -

Serving people with intellectual and developmental disabilities

Making Connections Calendar

April - June, 2006 To register for any of these events, call Arc Greater Twin Cities @ (952) 920-0855

Or www.arcgreatertwincities.org.

April 2006

4/5/06 Day at the Capital 10 a.m.

Kelly Inn, 161 St. Anthony Ave., St. Paul

Learn about key 2006 legislative issues in the morning and then visit with legislators in the afternoon.

For registration or information, contact The Arc of Minnesota at www.TheArcOfMinnesota.org or call (651) 523-0879, ext. 113.

4/8/06 Get Set! Special Training: Extended School Year

10 a.m. – 12 p.m. or 1 – 3 p.m.

West Metro Learning Connections

355 Second Street, Excelsior

FREE for Arc members; \$20 per person for non-members

Did you ever wonder how a child qualifies for Extended School Year (ESY) services? Come to this GetSet! short course to learn more.

Sibshop I (for ages 5 – 8)

4/8/06 5/13/06 or 6/10/06

10 a.m. – 12 p.m.

Topic: Disability Awareness

West Metro Learning Connections

355 Second Street, Excelsior

FREE for Arc members; \$40 per four-month session for non-members

Sibshop II (for ages 9 – 12)

4/8/06 5/13/06 or 6/10/06

1- 3 p.m.

Topic: Disability Awareness

West Metro Learning Connections

355 Second Street, Excelsior

FREE for Arc members; \$40 per four-month session for non-members

5/25/06 Sensory Processing Disorder

7 – 9 p.m. Learn what Sensory Processing Disorder is and how it can affect the learning, social growth and behavior of children who have it.

6/29/06 Make it and Take it: Visual Scheduling 6:30—8:30 a method of making the concept of time more concrete and manageable for people with disabilities.

Eisenhower Community Center

1001 Highway 7, Hopkins

FREE for Arc members, \$20 per person for non-members

FREE for Arc members, \$20 per person for non-members

Medical Health Care options @ St. Mary's Clinics

Medical care is available from St. Mary's Clinics for residents who are in transition due to unemployment, for those who have unaffordable insurance coverage or for those working in low-paying jobs without medical benefits. Five west metro sites in the Park Nicollet Clinics are available.

All patients will be screened by telephone for eligibility by St. Mary's

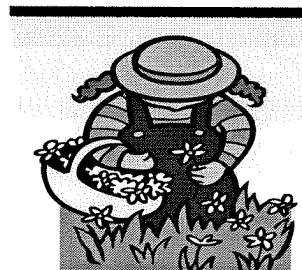
Health Clinics staff, then referred to one of the clinics.

Medical services available:

- Basic primary and preventive health care services
- Treatment for acute and ongoing medical problems
- Health education and wellness counseling

More Information

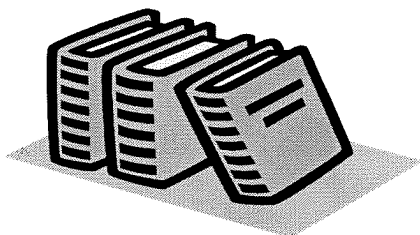
Call 651-690-7029



Governor's Council on Developmental Disabilities

The Minnesota Governor's Council on Developmental Disabilities web site is an ongoing project to provide materials to enhance independence, inclusion, individual productivity and self-determination for people with disabilities.

At the website (www.mncdd.org) you will find helpful, self-paced online learning courses available to



anyone who would like to increase their knowledge and skills in self advocacy, education and employment.

MN Coalition for Kids

The Coalition for Children with Disabilities-Legislative goals and fact sheets that families can use with legislators are available are now available online at:

www.pacer.org/legislation/index.htm

**West Suburban Family
Group (WSFG)**

Eisenhower Community Center
1001 Hwy 7 #221
Hopkins, MN 55305

Phone: 952-933-5769
Fax: 952-933-0430
E-mail: wseinfo@wsei.org

**Our Mission: Support, Affirm and
Empower Families of Children With
Special Needs**

**Our Goals: Provide opportunities
for parents to access information
and resources**



WSFG Parent Connection

Call Wendy@952-933-4769

PARENT CONNECTION offers a pool of trained volunteer parents who can provide emotional support and information to other parents. Mentor parents can share hope, strength, knowledge and genuine concern.

- Listening & Understanding
 - Help to feel less alone
 - Ways to deal with stress
 - Making time for yourself
 - Resources in caring for a child with special needs
 - Helping family and friends understand
 - Brainstorming Skills
- There is no fee. All information**
-